



Deep Landing Workshop
LIGHTING CATALOG

FINISHES & GLASS



SECTIONS:

- Glass, p. 2
- Metal Finishes, p. 4
- Natural Wood, p. 9
- Painted Finishes, p. 11

GLASS

Glass Selection: We offer various clear art glasses, as well as handmade restoration glass.



GL-C1033
Ice textured glass



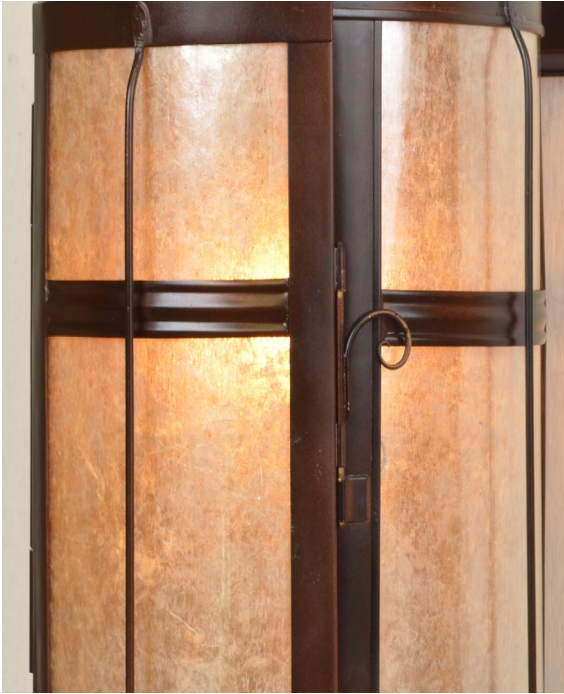
GL-C1033F
Frosted ice textured glass, +4%



GL-C1115
Seedy glass



GL-C1115F
Frosted seedy glass, +4%



GL-MICA
White mica - This comes with a protective acrylic lens, +4%.



GL-RST
Handmade restoration glass, +7%. This comes with varying degrees of imperfections from the manufacturer.



GL-W01S
Textured seedy glass



GL-W01SF
Frosted seedy glass, +4%

METAL FINISHES

WHAT WE WORK WITH: We work with sheet copper and brass, lead coat copper, tin (plated steel), and steel, which can be referred to as iron. You can use any of those metals for interior applications. Tin is for interior only. For steel, we can do an oxidized wrought iron or rust finish for interior. Steel can be used for exterior if painted or powder coated.

LEAD COAT COPPER: Lead coat copper is used as a highly durable roofing material. If you want your cathedral roof to last hundreds of years, this is the material you use. If your fixtures are exposed to salty air, this is the material you should use. When we oxidize it to a dark finish, it looks like wrought iron, but doesn't have the propensity to rust. Our light lead coat copper has an old grayish look. We can also get a warm old pewter look.

METAL FINISHING: We do a variety of patina finishes, which are really oxidized metals. On steel it's called rust. On non-ferrous metals you can get blacks, browns, and, most commonly, greens. On top of the patinas we apply what is known as "direct to the substrate lacquer". We use a product called Permalac. It is either clear or has a small amount of black/brown in it, to provide a tint. Permalac was developed for outdoor statuary. It stabilizes the patinas, and in an exterior environment, it has a much greater life than traditional lacquers. For the final touch we hand wax the fixture.

NOTES:

1. We have, on occasion been asked to leave the metal in its raw state, so that it can go to weather. In such cases we still wax the fixture as the final step. It retards the weathering, but not to a great extent, and it protects against a workman's fingerprints becoming a feature of the final patina.
2. When oxidizing metal, the tones can vary, so an exact match with any finish sample is not guaranteed. We can adjust the darkness of most of our metal finishes, but it is impossible, when working with natural metal patinas, to get an exact color.
3. We can provide finish sample(s) for approval, when an order is placed.



FIN-DLCC
Dark lead coat copper. Requires 7% upcharge



FIN-LLCC
Light lead coat copper. Requires 7% upcharge.



FIN-ANTBCU
Blackened copper



FIN-ANTCU
Antique copper. This is a lighter version. We can go darker, and much darker.



FIN-ANTMBR
Antique medium brass, +15%. We can go lighter or darker.



FIN-ANTPBR
Antique polished brass, +25%. This is lightly etched brass and then polished back.



FIN-BRZOR
Oil rubbed bronze



FIN-BRZOR19
Lighter oil rubber bronze



FIN-CUDVERD
Dark copper verdigris, +15%



FIN-CUVERD
Copper verdigris, +10%



FIN-OPLCC
Old pewter using lead coat copper



FIN-OT18D
Dark old tin. Interior only.



FIN-OT18L
Light old tin. Interior only.



FIN-OTBRZ18
Old tin with a bronze tone.



FIN-WI16
Wrought iron. Interior only. An oxidized finish on steel that is a good alternative to the standard straight black that passes for a wrought iron finish.

NATURAL WOOD

WOOD SELECTION:

We offer cherry and walnut in sizes for many of our wood centered chandeliers. I know of no one else who offers this.

We do wood sconces, based on our chandelier spindles. They are basically halved chandelier spindles.



FIN-CHR
Natural cherry wood, +30%. Note the 23K gold bands on the flats.



FIN-WAL
Natural walnut wood, +30%. Again, note the 23K gold bands on the flat.



FIN-PINELAM
Laminated natural pine, +10%



FIN-DSWD
A distressed wood

PAINTED FINISHES

WHAT WE DO- Working with enamel or acrylic paints, we can achieve pretty much whatever you or your client would want. We're very good at adding the right texture.

NOTES:

1. What we show here is a very small selection of the possible.
2. We can provide finish sample(s) for approval, with an placed order.



FIN-FXIRIN
Faux iron for interior - A fine grained texture, reminiscent of a fine sand casting.



FIN-FXIRIN16
Faux iron for interior - A smoother sheen with light highlights.



FIN-FXIREX
Faux iron for exterior – The use of enamels allows for a heavier texture.



FIN-FXBRZ
Faux bronze - A textured corroded bronze.
Ask if you want a darker tone.



FIN-FXOP11
Faux old pewter – A lightly textured old pewter.



FIN-FXOP12
Faux old pewter – A non-textured faux pewter.



FIN-PCHB
Black powder coat – A satin black textured powder coat. For exterior applications, especially in a salt air environment.



FIN-13016
Faux dark antique bronze



FIN-PRG2018B
Gold rubbed back to a red – We used this for some chandeliers at Pennington School in NJ.



FIN-169RB2
Antique red with gold tones. We added some texture to this. These were for some sconces we did for Lawrenceville School in NJ.



FIN-110301RD
Heavy antique red. We used a heavier texture and added a heavily antiqued gold band in the center.



FIN-13014M1
Antique blue with antique gold trim. We did this on sconces for Millbrook School, in NY.



FIN-E0605
Antique eggshell white with gold banding.



FIN-CH90011
Antique grisaille white, rubbed back.



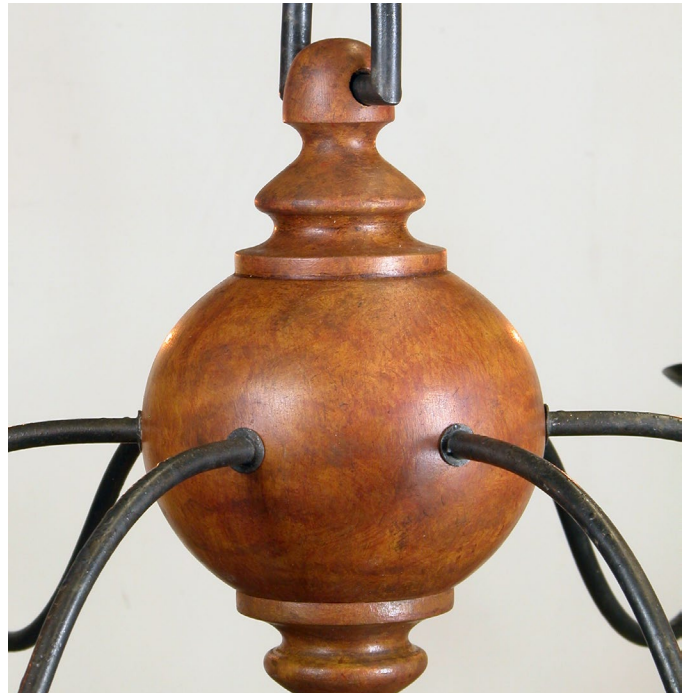
FIN-W0703
Antique white – note the swirl pattern on the top of the chandelier spindle.



FIN-D15YL
Antique yellow with red and blue undertones.



FIN-FXTMAPLE10
Faux tiger maple – We can do various faux woods, and marbles.



FIN-FXTMAPLE11
Faux red maple